

PLAN VIEW

SPECIFICATIONS

CONCRETE TO 5000PSI @ 28 DAYS

REINFORCEMENT TO ASTM A-615 GRADE 60

TOP SLAB:

#5 @ 6" O/C SHORT WAY

#4 @ 10" O/C LONG WAY

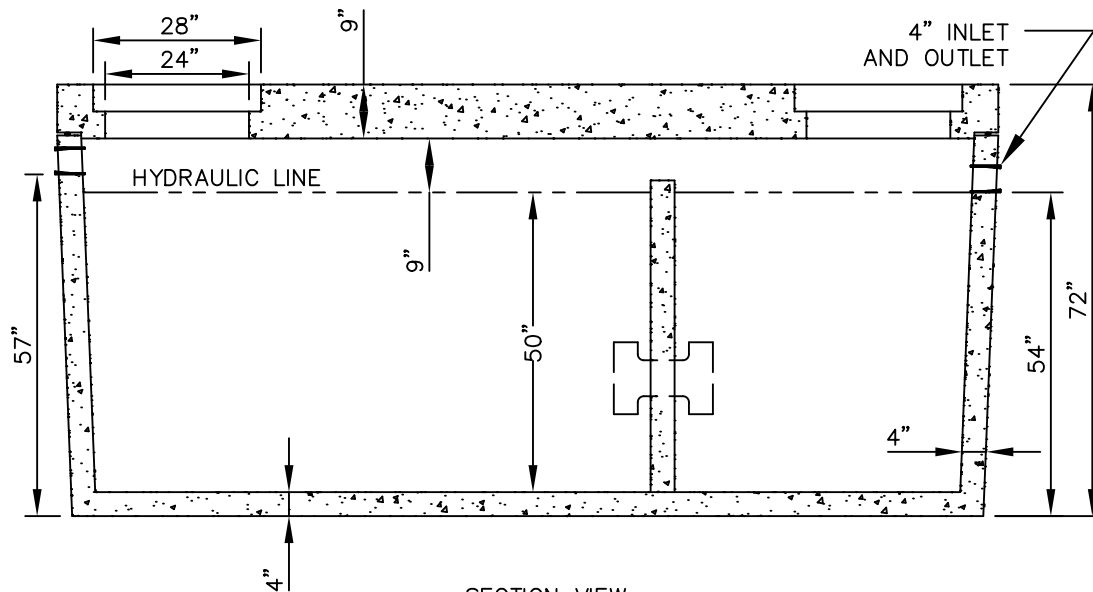
HS-20 TRAFFIC RATED TOP SLAB

MAX FILL HEIGHT NOT TO EXCEED 3' ABOVE TOP SLAB

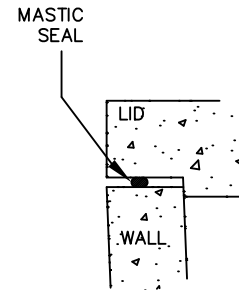
4" RUBBER GASKET SEALS PROVIDED INLET & OUTLET

STEEL H-20 RATED FRAME AND COVERS INCLUDED

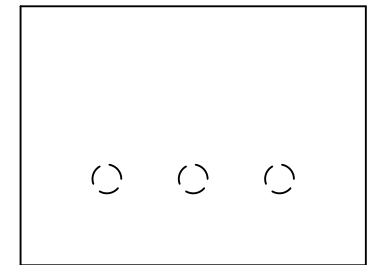
INTERNAL BAFFLE CONFIGURATION AS PER COUNTY SPECIFICATIONS



SECTION VIEW



SEAL DETAIL



WALL DETAIL

THIS DOCUMENT MAY NOT BE DISTRIBUTED, MODIFIED, ALTERED, OR REPRODUCED IN WHOLE OR IN PART WITHOUT THE PRIOR WRITTEN PERMISSION OF MARYLAND CONCRETE SEPTIC TANK INC.

REVISION	SIGNOFF	DATE	INITIAL
1			
2			
3			
4			
5			
6			
7			
8			

Maryland Concrete Inc.
 2000 GALLON TWO COMPARTMENT
 GREASE TRAP WITH LOAD BEARING LID

DRAWN: TLG 6/28/13
 CHECKED:
 SCALE: AS SHOWN

No. MC086

REVISION	DATE	REVISION DESCRIPTION	DESIGNER/CHECKER
3			
2			
1			
0	9/4/13	ISSUED FOR CONSTRUCTION	JMH/TLG