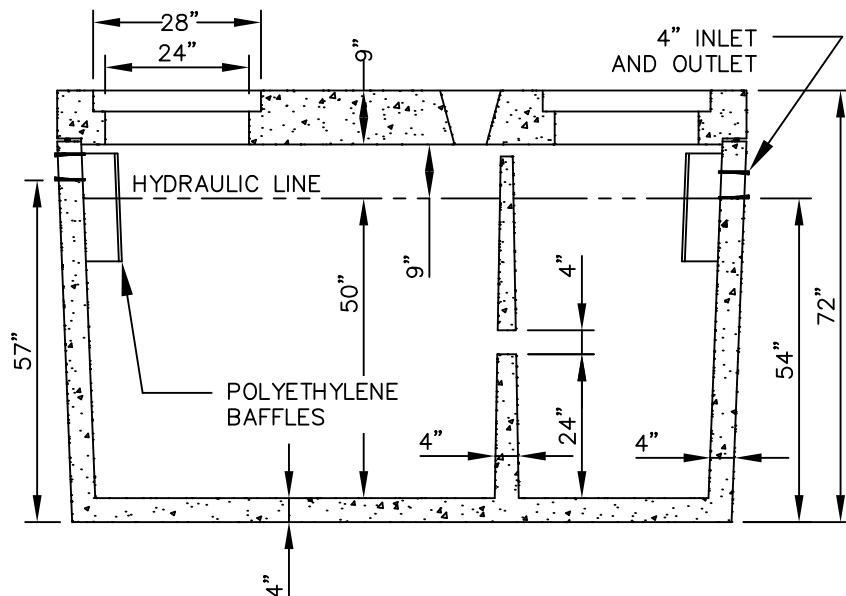


PLAN VIEW



SECTION VIEW

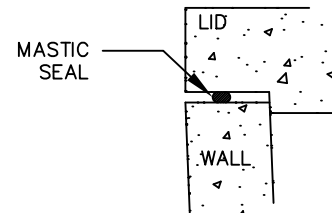
SPECIFICATIONS

5000PSI WITH SUPER PLASTICIZER

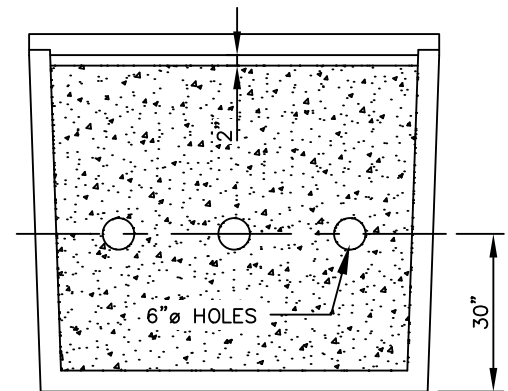
BOTTOM AND SIDES ARE REINFORCED WITH 6X6X10 GAUGE WIRE

TOP IS REINFORCED WITH 1/2" GRADE 60 REBAR ON 12" CENTERS

POLYLOK III PRESSURE RATED RUBBER SEALS AVAILABLE UPON REQUEST



SEAL DETAIL



PARTITION DETAIL

THIS DOCUMENT MAY NOT BE DISTRIBUTED, MODIFIED, ALTERED, OR REPRODUCED IN WHOLE OR IN PART WITHOUT THE PRIOR WRITTEN PERMISSION OF MARYLAND CONCRETE SEPTIC TANK INC.

REVISION	SIGNOFF
Number	Date Initial
1	
2	
3	
4	
5	
6	
7	
8	

Maryland Concrete Inc.
 1500 GALLON 2 COMPARTMENT GREASE TRAP
 DRAWN: JMH 6/9/13
 CHECKED: TLG
 SCALE: 3/8" = 1'

No. MC007

3			
2			
1			
0	9/4/13	ISSUED FOR CONSTRUCTION	JMH/TLG
	DATE	REVISION DESCRIPTION	DESIGNER/CHECKER